

Acta Crystallographica Section E

**Structure Reports**

**Online**

ISSN 1600-5368

Editors: **W. Clegg** and **D. G. Watson**

## **(4-Methoxyphenyl)(2-methylphenyl)methanone**

**M Mahendra, S. A. Khanum, A. Singh, S. Shashikanth, B. H. Doreswamy, M. A. Sridhar and J. Shashidhara Prasad**

Copyright © International Union of Crystallography

Author(s) of this paper may load this reprint on their own web site provided that this cover page is retained. Republication of this article or its storage in electronic databases or the like is not permitted without prior permission in writing from the IUCr.

## (4-Methoxyphenyl)(2-methylphenyl)methanone

M Mahendra,<sup>a</sup> S. A. Khanum,<sup>b</sup>  
A. Singh,<sup>b</sup> S. Shashikanth,<sup>b</sup>  
B. H. Doreswamy,<sup>a</sup>  
M. A. Sridhar<sup>a</sup> and  
J. Shashidhara Prasad<sup>a\*</sup>

<sup>a</sup>Department of Studies in Physics,  
Mansangotri, University of Mysore, Mysore  
570 006, India, and <sup>b</sup>Department of Studies in  
Chemistry, Mansangotri, University of  
Mysore, Mysore 570 006, India

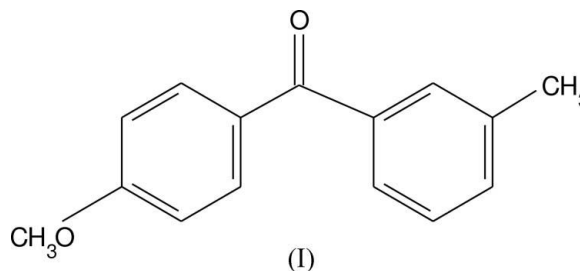
Correspondence e-mail:  
mas@physics.uni-mysore.ac.in

In the title compound, C<sub>15</sub>H<sub>14</sub>O<sub>2</sub>, the dihedral angle between the two benzene rings is 56.34 (7)°.

Received 8 August 2005  
Accepted 15 August 2005  
Online 20 August 2005

## Comment

Benzophenones play an important role in imparting anti-inflammatory (Khanum, Shashikanth *et al.*, 2004; Khanum, Venu *et al.*, 2004), anti-anaphylactic (Evans *et al.*, 1987), antimalarial (Wiesner *et al.*, 2001) and anticancer (Hsieh *et al.*, 2003) activities. The presence of different substituents on the benzophenone nucleus is crucial in determining the quantitative structure–activity relationships. Owing to the importance of various substituents on the nucleus, the title compound, (I), was synthesized and its crystal structure is reported here.



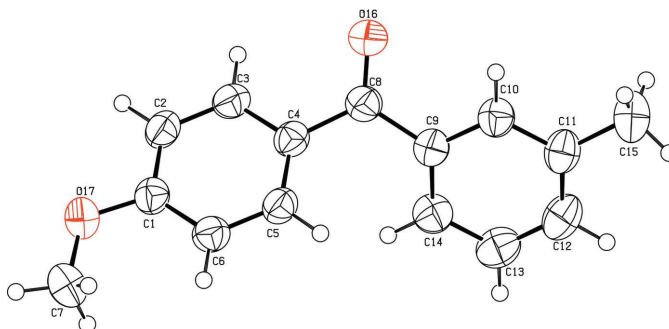
## Key indicators

Single-crystal X-ray study  
T = 295 K  
Mean  $\sigma$ (C–C) = 0.002 Å  
R factor = 0.048  
wR factor = 0.143  
Data-to-parameter ratio = 13.5

For details of how these key indicators were automatically derived from the article, see <http://journals.iucr.org/e>.

The molecule of (I) is non-planar (Fig. 1). The dihedral angle between the two benzene rings is 56.37 (3)°; this value is much smaller than the corresponding value of 75.2° observed in 3,4-dimethoxyphenyl(2-chlorophenyl)methanone [(II); Mahendra *et al.*, 2003]. Bond lengths and angles have normal values and are comparable with those reported for (II). The crystal packing is stabilized by intermolecular C15–H15A···O16<sup>i</sup> (symmetry code as in Table 2) hydrogen bonds, which link the molecules into chains (Fig. 2).

A detailed study of the biological activity of (I) is underway.



**Figure 1**  
View of (I), with 50% probability displacement ellipsoids.

## Experimental

To a mixture of anhydrous aluminium chloride (22 g, 9.2 mmol) in dry carbon disulfide (15 ml), 4-methoxy benzene (1 g, 9.2 mmol) and 3-methylbenzoic acid (1.25 g, 9.2 mmol) were added. The reaction mixture was protected from moisture by a calcium chloride guard tube and stirred for 30 min. At the end of this period, the solution was cooled and decomposed by acidified ice-cold water. The carbon disulfide was removed by distillation. The residual solid was crushed into a powder, extracted with diethyl ether (60 ml), and the ether layer was washed well with 10% sodium hydroxide solution (60 ml), followed by distilled water. Evaporation of the diethyl ether after drying over anhydrous sodium sulfate followed by recrystallization from ethyl alcohol gave the title compound (yield 85%; m.p. 329 K).

### Crystal data

$C_{15}H_{14}O_2$	$D_x = 1.239 \text{ Mg m}^{-3}$
$M_r = 226.26$	Mo $K\alpha$ radiation
Monoclinic, $P2_1/c$	Cell parameters from 4020 reflections
$a = 7.592(4) \text{ \AA}$	$\theta = 2.3\text{--}25.0^\circ$
$b = 14.147(7) \text{ \AA}$	$\mu = 0.08 \text{ mm}^{-1}$
$c = 11.342(7) \text{ \AA}$	$T = 295(2) \text{ K}$
$\beta = 95.231(2)^\circ$	Block, colourless
$V = 1213.1(12) \text{ \AA}^3$	$0.3 \times 0.2 \times 0.2 \text{ mm}$
$Z = 4$	

### Data collection

MacScience DIPLabo 32001 diffractometer	1882 reflections with $I > 2\sigma(I)$
$\omega$ scans	$R_{\text{int}} = 0.019$
Absorption correction: none	$\theta_{\text{max}} = 25.0^\circ$
4020 measured reflections	$h = -9 \rightarrow 9$
2123 independent reflections	$k = -16 \rightarrow 16$
	$l = -13 \rightarrow 13$

### Refinement

Refinement on $F^2$	$w = 1/[\sigma^2(F_o^2) + (0.0795P)^2 + 0.1331P]$
$R[F^2 > 2\sigma(F^2)] = 0.048$	where $P = (F_o^2 + 2F_c^2)/3$
$wR(F^2) = 0.143$	$(\Delta/\sigma)_{\text{max}} = 0.001$
$S = 1.19$	$\Delta\rho_{\text{max}} = 0.41 \text{ e \AA}^{-3}$
2123 reflections	$\Delta\rho_{\text{min}} = -0.37 \text{ e \AA}^{-3}$
157 parameters	Extinction correction: <i>SHELXL97</i>
H-atom parameters constrained	Extinction coefficient: 0.22 (2)

**Table 1**

Selected geometric parameters ( $\text{\AA}$ ,  $^\circ$ ).

O17—C1	1.3593 (17)	C8—O16	1.2192 (18)
O17—C7	1.421 (2)	C8—C9	1.496 (2)
C4—C8	1.486 (2)		
C1—O17—C7	118.38 (12)	O17—C1—C2	115.50 (12)
O17—C1—C6	124.86 (13)		

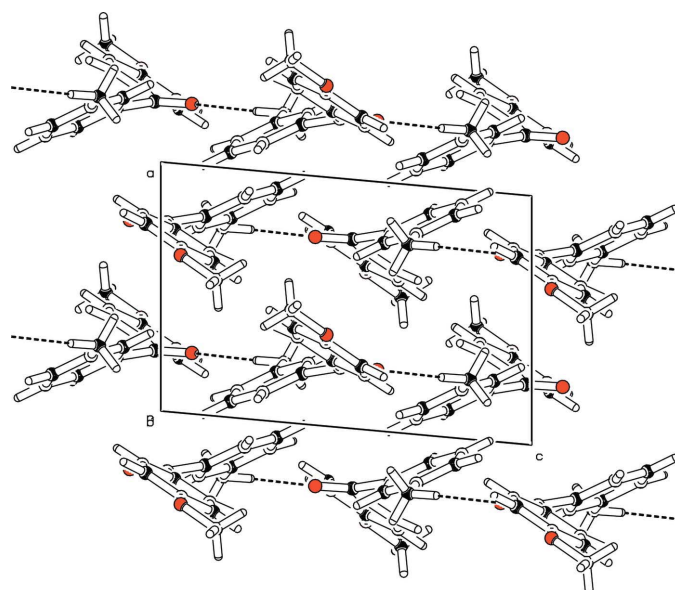
**Table 2**

Hydrogen-bond geometry ( $\text{\AA}$ ,  $^\circ$ ).

$D\text{---}H\cdots A$	$D\text{---}H$	$H\cdots A$	$D\cdots A$	$D\text{---}H\cdots A$
C15—H15A $\cdots$ O16 <sup>i</sup>	0.96	2.57	3.517 (3)	169

Symmetry code: (i)  $x, -y + \frac{3}{2}, +z - \frac{1}{2}$ .

H atoms were placed at idealized positions and allowed to ride on their parent atoms, with C—H distances of 0.96  $\text{\AA}$  and  $U_{\text{iso}}(\text{H})$  values set equal to  $xU_{\text{eq}}(\text{carrier atom})$ , where  $x = 1.5$  for methyl H atoms and



**Figure 2**

The packing of (I), viewed down the  $b$  axis. Dashed lines indicate hydrogen bonds.

1.2 for other H atoms. A rotating group refinement was used for the methyl groups.

Data collection: *XPRESS* (MacScience, 2002); cell refinement: *SCALEPACK* (Otwinowski & Minor, 1997); data reduction: *DENZO* (Otwinowski and Minor, 1997) and *SCALEPACK*; program(s) used to solve structure: *SHELXS97* (Sheldrick, 1990); program(s) used to refine structure: *SHELXL97* (Sheldrick, 1997); molecular graphics: *PLATON* (Spek, 2003) and *ORTEPII* (Johnson, 1976); software used to prepare material for publication: *SHELXL97*.

We thank the DST, Government of India, for financial assistance under project No. SP/I2/FOO/93. MM thanks the CSIR, Government of India, for the award of a Senior Research Fellowship.

## References

- Evans, D., Cracknell, M. E., Saunders, J. C., Smith, C. E., Williamson, W. R. N., Dowson, W. & Sweatman, W. J. F. (1987). *J. Med. Chem.* **30**, 1321–1327.
- Hsieh, H. P., Liou, J. P., Lin, Y. T., Mahindoo, M., Chang, J. Y., Yang, Y. N., Chern, S. S., Tan, U. K., Chang, C. W., Chen, T. W., Lin, C. H., Chang, Y. Y. & Wang, C. C. (2003). *Bioorg. Med. Chem. Lett.* **13**, 101–105.
- Johnson, C. K. (1976). *ORTEPII*. Report ORNL-5138. Oak Ridge National Laboratory, Tennessee, USA.
- Khanum, S. A., Shashikanth, S. & Deepak, A. V. (2004). *Bioorg. Chem.* **32**, 211–222.
- Khanum, S. A., Venu, T. D., Shashikanth, S. & Firdouse, A. (2004). *Bioorg. Med. Chem. Lett.* **14**, 5351–5355.
- MacScience (2002). *XPRESS*. MacScience Co. Ltd, Yokohama, Japan.
- Mahendra, M., Doreswamy, B. H., Sudha, B. S., Khanum, S. A., Shashikanth, S., Sridhar, M. A. & Prasad, J. S. (2003). *Anal. Sci.* **19**, x57–x58.
- Otwinowski, Z. & Minor, W. (1997). *Methods in Enzymology*, Vol. 276, Macromolecular Crystallography, Part A, edited by C. W. Carter Jr. & R. M. Sweet, pp. 307–326. New York: Academic Press.
- Sheldrick, G. M. (1990). *Acta Cryst.* **A46**, 467–473.
- Sheldrick, G. M. (1997). *SHELXL97*. University of Göttingen, Germany.
- Spek, A. L. (2003). *J. Appl. Cryst.* **36**, 7–13.
- Wiesner, J., Mitsch, A., Wibner, P., Jomaa, H. & Schlitzer, M. (2001). *Bioorg. Med. Chem. Lett.* **11**, 423–424.